

# README: miWQS

## Introduction

We have integrated WQS regression into the MI framework in a flexible  $\mathcal{R}$  package called **miWQS** to meet a wide variety of needs (Figure 1). The data used in this package consist of a mixture of correlated components that share a common outcome while adjusting for other covariates. The correlated components in the set,  $X$ , may be complete or interval-censored between zero and low thresholds, or detection limits, that may be different across the components. The common outcome,  $y$ , may be modeled as binary, continuous, count-based, or rate-based and can be adjusted by the **family** and **offset** arguments of `estimate.wqs()`. Additional covariates,  $Z$ , may be used in the bootstrap imputation and WQS models. If  $X$  is interval-censored, the choice of the imputation technique depends on the majority vote of BDL values among the components. When most chemicals have 80% of its values BDL, we suggest to use the BDLQ1 approach. When most chemicals have less than 80% of its values BDL, the user should perform Bayesian or bootstrapping multiple imputation. Previous literature suggests to ignore any chemicals that have greater than 80% of its values BDL. The **miWQS** package, though, still allows the user to perform single imputation. Regardless of the technique used, researchers may use the **miWQS** package in order to detect an association between the mixture and the outcome and to identify the important components in that mixture.

## Installation

You can install the released version of miWQS from CRAN with:

```
install.packages("miWQS")
```

## Example

Please see the vignette (that will soon be published) for a detailed step-by-step guide in using this package.

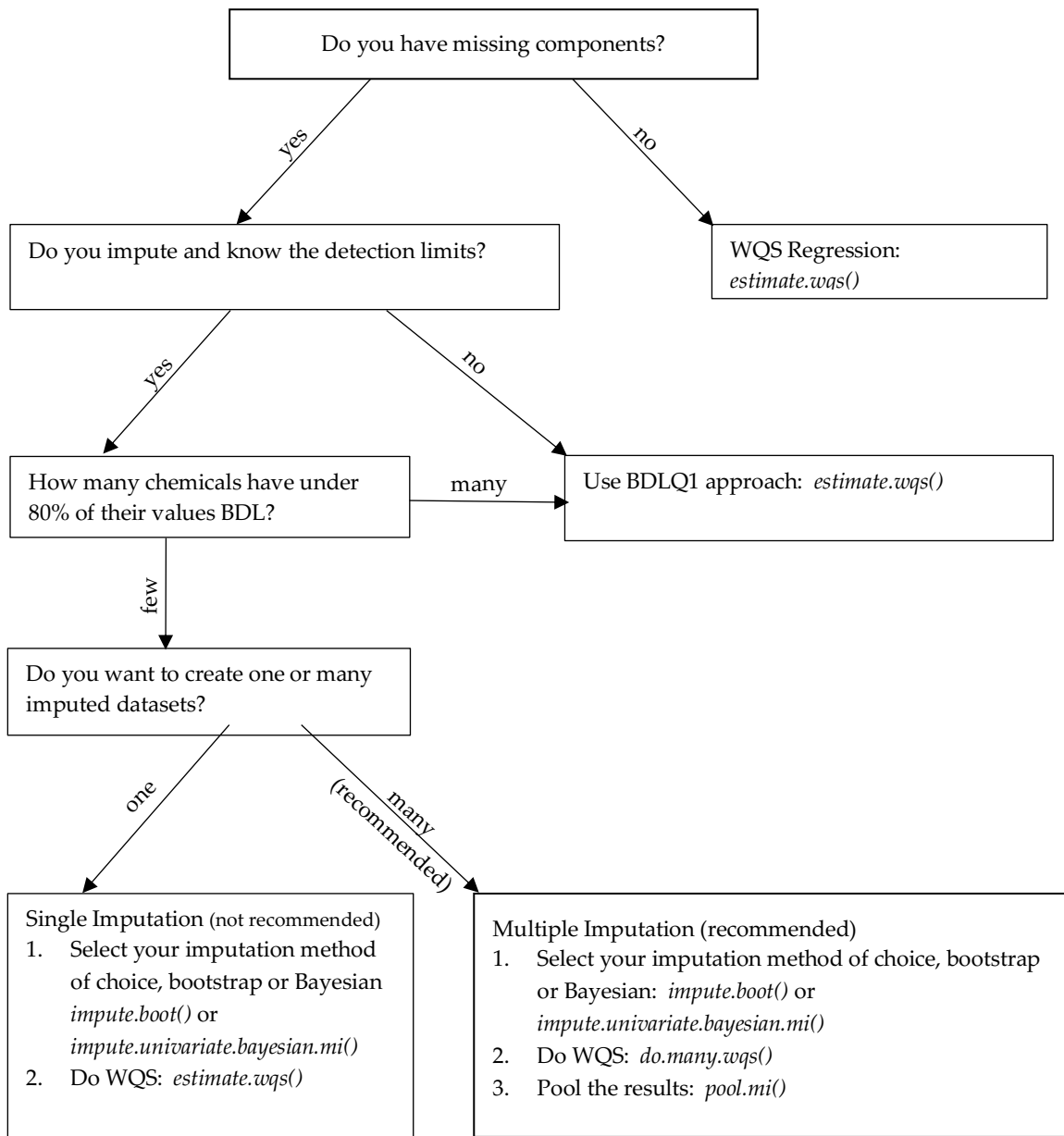


Figure 1: A decision tree to help researchers in using the miWQS package. The package is flexible and can meet a wide range of needs.