

Modeling and mapping species distributions

Richard Chandler

Feb 5, 2019

Abstract

A species' distribution can be characterized by either occurrence probability or population density, defined for all locations in some spatial extent. Defining distribution in terms of these two parameters avoids the ambiguity surrounding the indices of occurrence or abundance produced by many presence-only algorithms. The `unmarked` package contains methods of fitting occurrence and abundance models, and can be used to produce distribution maps with the help of `R`'s GIS capabilities, as is demonstrated in this vignette. Unlike many other tools for modeling species distributions, the models in `unmarked` account for bias due to spatial and temporal heterogeneity in detection probability. Furthermore, `unmarked` includes models of population dynamics, allowing one to map quantities such as local colonization or extinction probability.

Mapping Occurrence Probability

In this example, we use the `occu` function to fit the single-season occupancy model of (MacKenzie et al., 2002) to data on the European crossbill (*Loxia curvirostra*) collected in 267 1-km² sample quadrats in Switzerland, 1999 (Schmid et al., 2004). We then use the model to compute the expected probability of occurrence at each pixel in a raster defining the Swiss landscape.

First we load the `crossbill` data, which contains the detection/non-detection data and covariates. The dataset actually contains data from multiple years, but we are only going to analyze data from the first year, 1999. A multi-year analysis of occupancy dynamics could be accomplished using the `colext` function, and in addition to mapping occurrence probability, it would be possible to also map colonization and extinction probabilities. The following commands format the data.

```
> data(crossbill)
> umf <- unmarkedFrameOccu(
  y=as.matrix(crossbill[,c("det991", "det992", "det993")]),
  siteCovs=crossbill[,c("ele", "forest")],
  obsCovs=list(date=crossbill[,c("date991", "date992", "date993")]))
> sc <- scale(siteCovs(umf))
> siteCovs(umf) <- sc
> head(umf)
```

Data frame representation of `unmarkedFrame` object.

	y.1	y.2	y.3	ele	forest	date.1	date.2	date.3
1	0	0	0	-1.15390803	-1.14710440	34	59	65
2	0	0	0	-1.15390803	-0.49668159	17	33	65
3	NA	NA	NA	-0.21745379	-0.09920098	NA	NA	NA
4	0	0	0	-0.37352950	-0.93029679	29	59	65
5	0	0	0	-0.06137809	0.00920282	24	45	65
6	NA	NA	NA	-0.99783232	-1.18323900	NA	NA	NA
7	0	0	0	-0.68568091	-1.03870060	26	54	74
8	0	0	0	-0.84175662	0.91256783	23	43	71
9	0	0	0	-0.99783232	-1.07483520	21	36	56
10	0	0	0	-0.99783232	-0.78575839	37	62	75

Notice that the site covariates, elevation and forest, were standardized using the `scale` function. Standardization isn't always necessary, but it can make it easier to find the maximum likelihood estimates. When standardizing covariates and then making predictions, it is important to retain the original sample mean and standard deviation. The reason for this is explained below.

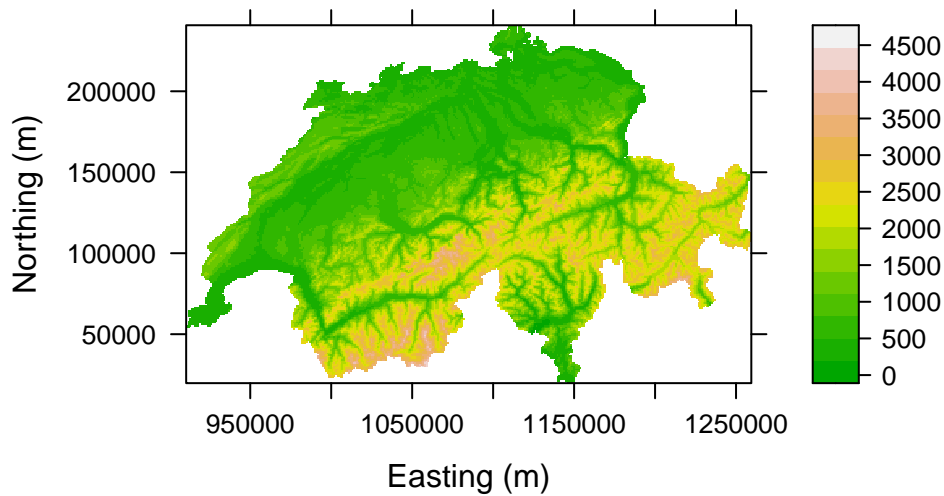


Figure 1: Elevation in Switzerland

Fitting a model is now straight-forward. In many cases, we would fit several models corresponding to competing hypotheses, but for simplicity, we stick with this single model.

```
> (fm.occu <- occu(~date ~ele + I(ele^2) + forest, umf))
Call:
occu(formula = ~date ~ ele + I(ele^2) + forest, data = umf)
```

Occupancy:

	Estimate	SE	z	P(> z)
(Intercept)	0.464	0.541	0.857	0.39137
ele	1.228	0.319	3.846	0.00012
I(ele^2)	-1.333	0.417	-3.194	0.00140
forest	0.654	0.274	2.385	0.01706

Detection:

	Estimate	SE	z	P(> z)
(Intercept)	-2.2356	0.52283	-4.28	0.000019
date	0.0254	0.00752	3.39	0.000711

AIC: 455.3892

Now that we have our fitted model, we can use it to predict occurrence probability at each pixel in the Swiss landscape. The `Switzerland` dataset contains country-wide data. There are many ways to display it—here is an example of mapping elevation using the `levelplot` function in the `lattice` package (Sarkar, 2008).

```
> data(Switzerland)
> print(levelplot(elevation ~ x + y, Switzerland, aspect="iso",
  xlab="Easting (m)", ylab="Northing (m)",
  col.regions=terrain.colors(100)))
```

The `raster` package (van Etten, 2012) provides another alternative. Here we create two raster objects and specify the coordinate system.

```
> library(raster)
> elevation <- rasterFromXYZ(Switzerland[,c("x","y","elevation")],
```

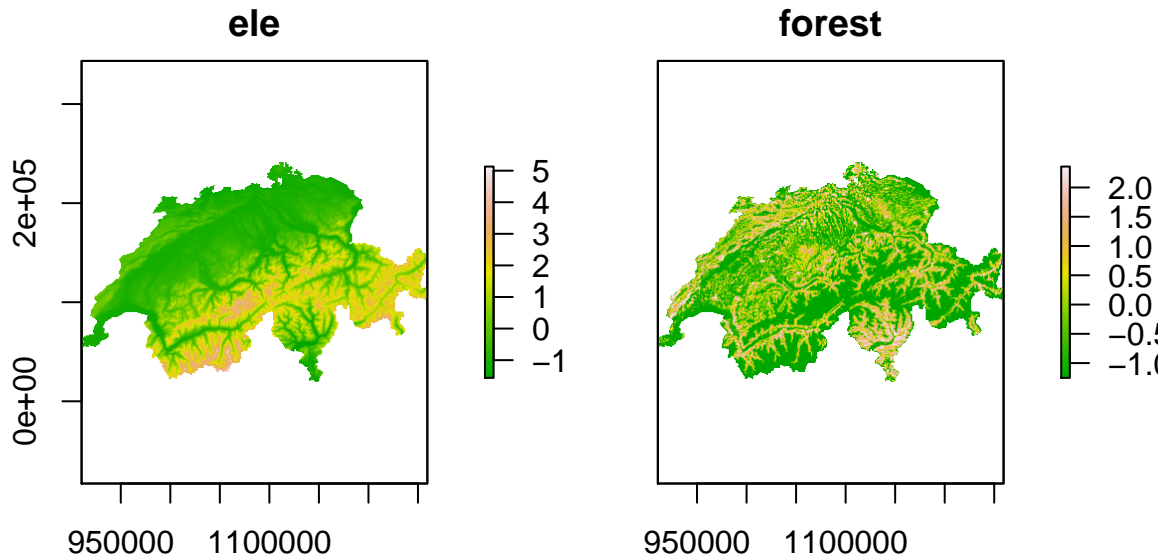


Figure 2: Elevation and forest cover, standardized.

```

crs="+proj=somerc +lat_0=46.95240555555556 +lon_0=7.439583333333333 +k_0=1 +x_0=600000 +y_0=200000
> forest <- rasterFromXYZ(Switzerland[,c("x","y","forest")],
crs="+proj=somerc +lat_0=46.95240555555556 +lon_0=7.439583333333333 +k_0=1 +x_0=600000 +y_0=200000

```

Since we standardized the covariates during the model fitting process, we need to transform the country-wide data using the same values. Note, we don't want to use the mean and SD of the rasters themselves, we want to use the mean and SD of the original covariates used to fit the models, which are stored as attributes of the `sc` object. The following commands display the original means and SDs and then transform the rasters and join them in a raster "stack."

```

> attr(sc, "scaled:center")
      ele      forest
1189.32584  34.74532
> attr(sc, "scaled:scale")
      ele      forest
640.71471  27.67431
> ele.s <- (elevation-1189)/640
> forest.s <- (forest-34.7)/27.7
> ef <- stack(ele.s, forest.s)
> names(ef) <- c("ele", "forest")
> plot(ef, col=terrain.colors(100))

```

It is important to assign `names` that exactly match the covariate names used to fit the model. This is required by the `predict` function as demonstrated later. The `predict` function is useful for computing spatially-referenced model predictions, standard errors, and confidence intervals, but it is computationally demanding when there are many pixels in the raster. Thus, if measures of uncertainty are not required, the following code can be used to quickly produce the species distribution map shown in Fig.3.

```

> (beta <- coef(fm.occu, type="state"))
      psi(Int)      psi(ele) psi(I(ele^2))      psi(forest)
0.4638233      1.2276426      -1.3327186      0.6544976
> logit.psi <- beta[1] + beta[2]*ele.s + beta[3]*ele.s^2 + beta[4]*forest.s
> psi <- exp(logit.psi) / (1 + exp(logit.psi))
> #plot(psi, col=terrain.colors(100))
> print(splot(psi, col.regions=terrain.colors(100)))

```

As of version 0.9-6, the `predict` method in `unmarked` can make predictions using an object of class `RasterStack` from the `raster` package. As mentioned previously, the rasters must be named, perhaps by using the `names(someraster) <- somename` method. The object returned by `predict` is another raster stack with rasters for the expected values of the parameter of interest, the standard

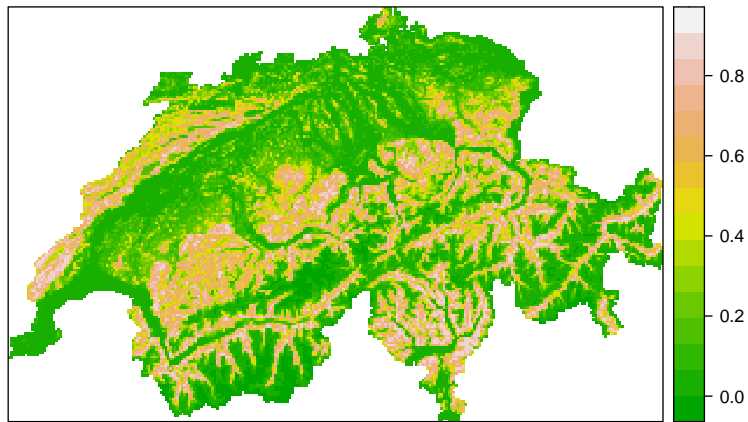


Figure 3: A species distribution map for the European crossbill in Switzerland. The colors represent occurrence probability.

errors, and the upper and lower confidence intervals. The following example is very slow because there are many of pixels in the raster. The resulting map is shown in Fig. 4.

```
> E.psi <- predict(fm.occu, type="state", newdata=ef)
> plot(E.psi, axes=FALSE, col=terrain.colors(100))
```

Users should be cautious when predicting from models that have categorical predictor variables, *i.e.* **factors**. The **raster** package does not have advanced methods for handling factors, and thus it is not easy to automatically create dummy variables from them as can typically be done using **model.matrix**. The safest option is to create the dummy variables manually before fitting the models, and to use the same variables as rasters for prediction.

A more important consideration when creating species distribution maps based upon occurrence probability is that of spatial scale. Occurrence probability will typically depend upon the area of the “site” in question. Thus, in our crossbill example, it would not be appropriate to use our model to predict occurrence probability for 10-km² pixels since the surveys were done in 1-km² quadrats. In some cases it might be possible to directly model the effect of site area on occurrence probability, in which case the effect could be accounted for in the predictions.

Mapping Population Density

Although distribution is typically described in terms of occurrence probability, which is always better than an index of occurrence probability, the best parameter for modeling species distribution is population density because density allows for inference about population size in any region of the species’ range. Furthermore, occurrence probability is simply the probability that abundance is greater than 0, so with density/abundance estimates, it is always possible to compute occurrence probability as a derived parameter.

In this example, we create a distribution map for the Island Scrub-Jay (*Aphelocoma insularis*), which is restricted to Santa Cruz Island, California. To do so, we fit the hierarchical distance sampling model of Royle et al. (2004), which allows for the estimation of abundance in each of the 300 × 300m pixels representing the island. The data were collected 307, 300-m radius point count (or “point transect”) surveyed during the Fall of 2008.

Important This analysis is for demonstration purposes only, and the estimates of population size should not be used for conservation or management purposes. Indeed, the Poisson assumption used

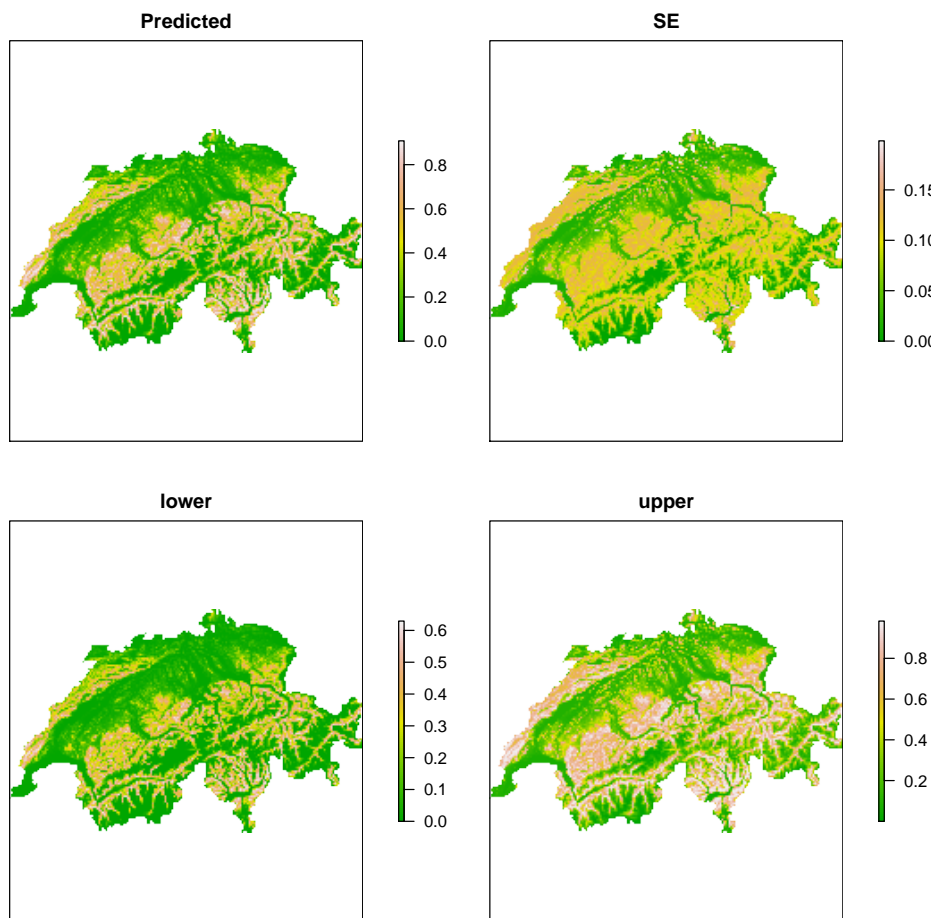


Figure 4: Expected occurrence probability along with standard errors and the limits of the asymptotic 95% confidence interval.

here was found to be inadequate by Sillett et al. (In press) who conducted a rigorous analysis and reported reliable estimate of population size.

Although we are fitting a model of population density, the steps of the analysis closely mirror those shown in the previous section. First, we format the data and fit a model, then we format the island-wide covariates and make predictions. The three covariates thought to influence jay abundance are elevation, forest cover, and chaparral cover. We also include the area of the survey plots in the analysis so that we can make predictions for regions of any area. Here is the code to format the data and fit the model.

```
> data(issj)
> covs <- scale(issj[,c("elevation", "forest", "chaparral")])
> area <- pi*300^2 / 10000
> jayumf <- unmarkedFrameDS(y=as.matrix(issj[,1:3]),
                             siteCovs=data.frame(covs, area),
                             dist.breaks=c(0,100,200,300),
                             unitsIn="m", survey="point")

> head(jayumf)
Data frame representation of unmarkedFrame object.
  y.1 y.2 y.3 elevation forest chaparral area
1    0  0  2 -1.20607849 -0.3309618 -0.1218243 28.27433
2    0  0  0 -0.36132054 -0.4429552  0.8384709 28.27433
3    0  0  0 -0.45797193 -0.3738751  2.1319298 28.27433
4    0  0  0 -0.14196112  1.3908065 -0.2737078 28.27433
5    0  0  0 -0.72588125 -0.4869152 -1.1562240 28.27433
6    0  0  0  0.01704522  0.6706992  0.2989173 28.27433
7    0  0  0 -0.11866710 -0.2671150  1.0326122 28.27433
8    0  0  0 -0.76411740 -0.4921486 -0.9332983 28.27433
9    0  0  0  0.40065595  0.5440524 -1.0759952 28.27433
10   0  0  0 -0.24030211 -0.4921486 -1.1023299 28.27433

> fm1 <- distsamp(~chaparral ~chaparral + elevation + offset(log(area)),
                  jayumf, keyfun="halfnorm", output="abund",
                  starts=c(-2.8,1,0,4.5,0))

> fm1
Call:
distsamp(formula = ~chaparral ~ chaparral + elevation + offset(log(area)),
          data = jayumf, keyfun = "halfnorm", output = "abund", starts = c(-2.8,
          1, 0, 4.5, 0))

Abundance:
      Estimate      SE      z P(>|z|)
(Intercept) -2.827 0.1609 -17.57 4.34e-69
chaparral    0.957 0.1460  6.55 5.60e-11
elevation   -0.244 0.0932  -2.61 8.96e-03

Detection:
      Estimate      SE      z P(>|z|)
sigma(Intercept)  4.73 0.0845 55.96 0.000000
sigmachaparral   -0.25 0.0744 -3.36 0.000773

AIC: 964.6426
```

Remarks. 1) The distance data were binned into 3 distance classes. 2) We used `output="abund"` even though, by specifying the offset, we effectively modeled population density. As stated previously, this allows us to make predictions of abundance for regions of arbitrary size.

The next thing to do is to format the raster data. For details, see the previous section—the process is the same, except that we need a raster for “area”, the size of each pixel in the raster data. This is necessary because the survey plots were larger than the pixels for which we want predictions of abundance.

```
> data(cruz)
> elev <- rasterFromXYZ(cruz[,c("x","y","elevation")],
                        crs="+proj=utm +zone=11 +ellps=GRS80 +datum=NAD83 +units=m +no_defs")
> forest <- rasterFromXYZ(cruz[,c("x","y","forest")],
                           crs="+proj=utm +zone=11 +ellps=GRS80 +datum=NAD83 +units=m +no_defs")
> chap <- rasterFromXYZ(cruz[,c("x","y","chaparral")],
```

```

      crs="+proj=utm +zone=11 +ellps=GRS80 +datum=NAD83 +units=m +no_defs")
> area.raster <- chap
> values(area.raster) <- 300*300/10000 # area of a grid pixel
> attr(covs, "scaled:center")
  elevation      forest  chaparral
202.0023616  0.0673357  0.2703592
> attr(covs, "scaled:scale")
  elevation      forest  chaparral
124.8818069  0.1368199  0.2338295
> elev.s <- (elev-202)/125
> forest.s <- (forest-0.0673)/0.137
> chap.s <- (chap-0.270)/0.234
> habitat <- stack(elev.s, forest.s, chap.s, area.raster)
> names(habitat) <- c("elevation", "forest", "chaparral", "area")

```

Now, when we use `predict`, it will return the expected number of jays in each pixel along with the standard errors and the 95% confidence intervals. We could sum these up to obtain an estimate of total population size. Sillett et al. (In press) did this and used the parametric bootstrap to estimate the variance of total population size.

```

> E <- predict(fm1, type="state", newdata=habitat)
  doing row 1000 of 5625
  doing row 2000 of 5625
  doing row 3000 of 5625
  doing row 4000 of 5625
  doing row 5000 of 5625
> plot(E, axes=FALSE, col=terrain.colors(100))

```

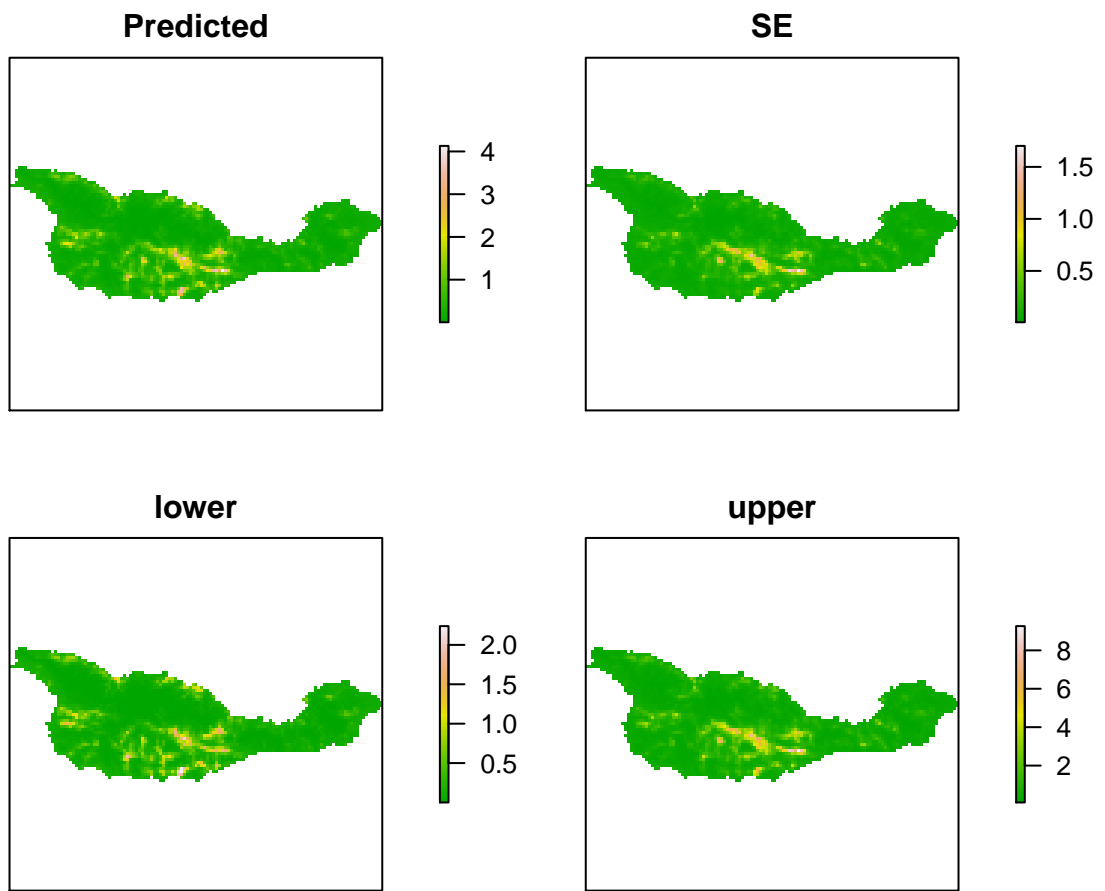


Figure 5: Expected Island Scrub-Jay abundance, SEs, and 95% CIs.

References

- MacKenzie, D. I., J. D. Nichols, G. B. Lachman, S. Droege, J. A. Royle, and C. A. Langtimm, 2002. Estimating site occupancy rates when detection probabilities are less than one. *Ecology* **83**:2248–2255.
- Royle, J. A., D. K. Dawson, and S. Bates, 2004. Modeling abundance effects in distance sampling. *Ecology* **85**:1591–1597.
- Sarkar, D., 2008. Lattice: Multivariate Data Visualization with R. Springer, New York. ISBN 978-0-387-75968-5.
- Schmid, H., N. Zbinden, and V. Keller, 2004. Überwachung der bestandsentwicklung häufiger brutvögel in der schweiz. *Swiss Ornithological Institute Sempach Switzerland* .
- Sillett, S., R. Chandler, J. Royle, M. Kéry, and S. Morrison, In press. Hierarchical distance sampling models to estimate population size and habitat-specific abundance of an island endemic. *Ecological Applications* .
- van Etten, R. J. H. . J., 2012. raster: Geographic analysis and modeling with raster data. R package version 1.9-67.